



# **User Manual Nord Sound Manager**

Version 6.7x

# Nord Sound Manager

The Nord Sound Manager is an application which allows you to organize the various memory areas, or partitions in a Nord instrument. It is also used to download pianos, samples, programs or performances to the Nord instrument or to upload any of these items - called sounds - from the instrument's memory to the computer hard drive. The Nord Sound Manager provides various methods for downloading sounds to the instrument and functions for backing up and restoring the entire content of a Nord instrument.

## System requirements

The Nord Sound Manager is compatible with computers running Mac OSX 10.4 or later, Windows XP, Windows 7, Windows 8 and Windows Vista. If you run the Nord Sound Manager on a Windows computer, you also need a Clavia USB Driver of version 3.0 or later installed.

## Installation

### USB Driver

**i** Mac OSX users may skip this section.

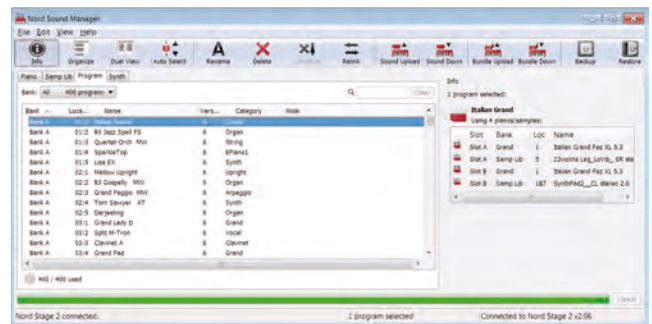
The USB driver is installed automatically if the computer is connected to the internet when the Nord instrument is connected to it. You can then allow Windows to search for the driver. Here is how to make a manual driver installation:

- 1 If you use a Windows computer (XP, Vista, 7 or 8), locate the Clavia USB Driver v3.x Setup file, downloadable from [www.nord-keyboards.com](http://www.nord-keyboards.com) and double click it.
- 2 Follow the instructions on the screen.
- 3 After the files have been installed, the driver will be activated when you connect the Nord instrument. Do this by connecting a USB cable between the Nord instrument and your computer.
- 4 When the Nord instrument is connected to the computer, the driver will be automatically activated and a confirmation will appear in the notification area in the Windows task bar.

### Sound Manager

- 1 **Windows users:** Launch the "Nord Sound Manager v6.x Setup" file and follow the instructions. The Nord Sound Manager can be accessed from the start menu when the installation procedure is finished.
  - 2 **Mac OSX users:** Double-click on the "Nord Sound Manager 6.x.dmg" and then drag the Nord Sound Manager application from the virtual hard drive to your "Applications" folder.
- Δ** The files mentioned for the driver and application installations can be downloaded from the [www.nordkeyboards.com](http://www.nordkeyboards.com) website. Please visit our website from time to time to check for any Nord Sound Manager updates.

## Overview



You can manage various types of content in the Nord instrument. Depending on the Nord model, there may be Piano, Sample, Organ Preset, Performance and Program partitions. These are accessed from the tabs, labeled according to the partition they represent, for example Piano, Samp Lib and Programs.

Only the appropriate tabs for each individual Nord model are available. The Nord Wave or C2D Organ are for instance not compatible with the Nord Piano Library which means that the Manager will not show a Piano tab if any of these models are used with the Nord Sound Manager.

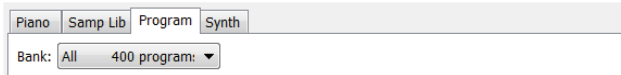
- i** Certain features in the v6 version of the Manager are exclusive to some models. If a Toolbar icon or a menu item is greyed out, this means that the instrument you use is not compatible with that particular feature.
- Δ** The actions that take place in the Nord Sound Manager will affect the memory in the Nord instrument. The Manager is online with a connected Nord at all times; any operations that you perform in the Manager will immediately be executed in the Nord instrument. If you for example delete a piano or a Program from the list in the Nord Sound Manager, that sound will be deleted from the Nord memory.

### The Toolbar



The Toolbar at the top of the Manager window gives you direct access to some of the most commonly used functions in the Nord Sound Manager. Clicking on an icon will activate its corresponding function, and a dialog will often appear asking for confirmation or further instructions from you.

## The Tabs



Select the memory area (partition) that you wish to work with by clicking its tab. As an example, the Piano and Samp Lib tabs allow you to alter the content of the piano and sample partitions and the Program tab allows you to organize the programs of your instrument. Pianos, samples, programs or performances and other types will be referred to as “sounds” throughout this manual.

*Press Ctrl+Tab on the computer keyboard to cycle between the tabs.*

The list of sounds can be ordered according to location, name, size, version and date, in ascending and descending order. Just click on a headline to select a preferred view.

## Partition Memory Indicator



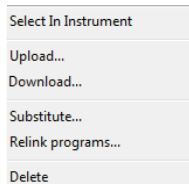
The memory indicator at the bottom of the window indicates how much memory is being used in the selected partition. The dark area shows the used memory, the bright indicates space that is available for new sounds.

## Right/Ctrl-Clicking

If you right/Ctrl-click on a sound, a context menu will provide options, depending on what type of sound you selected.

### Select in Instrument

This will select the chosen sound in the Nord instrument.



### Upload

This will upload the selected sound from the Nord instrument to the computer hard drive, to a folder of your choice.

### Upload To Bundle (Programs/Performances)

This will upload the selected program(s) and any piano and/or sample that this program uses, to a Bundle file on the hard drive. Bundles are explained in greater detail on page 4.

### Download

This is only available if you right-click on an empty location that does not contain a sound. This allows you to choose a file on the hard drive, to be downloaded to the location in the Nord instrument.



### Substitute (Pianos & Samples)

This feature makes it possible to substitute a piano or a sample in the instrument with another piano or sample from your hard drive. The process will update all the programs that used the former piano/sample, to use the new one after the substitution.

## Relink (Programs)

Use the Relink feature if you want one or several selected programs to use another piano or sample instead of the current sound. The sound in question have to be present in the memory of the Nord instrument. Relinking can also be used if a piano or sample is absent in the Nord instrument, to repair programs that are missing a component.

## Rename (Programs/Performances)

This allows you to rename, and assign a category to a program or performance. Characters supported are: a-z, A-Z, 0-9 and a hyphen (-). The name can contain up to 16 characters. Any other characters will not be displayed in the Sound Manager lists.

*Pianos and samples cannot be renamed, this option will not be available if you right-click on any of these.*

## Delete

This action will delete the selected sound(s) from the Nord instrument memory.

## File Formats

The Nord Sound Manager creates and/or uses files together with the Nord instruments. The files are exclusive for each individual model, the only exception to this are the Piano- and Sample Library files that several models can use. The various types are identified by different icons and the file extension with a model identifier and a type in the following fashion:

	Type	Description
	.npno	Piano files from the Nord Piano Library.
	.nsmp	Sample files from the Nord Sample Library.
	ends with “p” or “pg”	Program and Performance files.
	ends with “pb” or “bundle”	Bundle files.
	ends with “s”	Synth program files.
	ends with “op”	Organ Preset files
	ends with “b”	Backup files.

## The Quick Tour

Let's get acquainted with some of the functions in the Nord Sound Manager. If you perform the actions described in this tour, the content in the Nord instrument may be changed, but you can always get back to the factory content by restoring the instrument with the Factory Restore file, available for download from [www.nordkeyboards.com](http://www.nordkeyboards.com).

Backing up and restoring will be explained at the end of this tour, on page 6. If you have made some changes to the content of the Nord already, now would be a great time to do a Backup.

## Transfer sounds to the Nord

When the Nord instrument leaves the factory, the Program, Performance, Piano and the Samp Lib partitions are filled with sounds. In order to be able to try out other pianos, you can delete one or two pianos and load new ones and select this from the panel.

## Deleting a sound

- 1 Open the appropriate Tab and select a piano or a sample to delete and press the Delete icon in the toolbar.

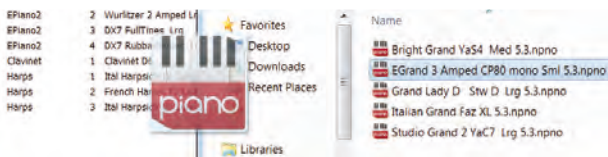
You can also right-click on the sound and choose the Delete option or use the backspace or delete keys on the computer keyboard.

A dialog appears where you will be asked to confirm your intentions. If any programs uses the soon-to-be deleted piano (or sample), you will be alerted about this. If you confirm by clicking Yes, the sound in the Nord instrument will be deleted.

*If you delete a piano or sample that is used by any programs, these programs will then be missing an important part. This can be fixed by downloading the same sound at a later time.*

## Download a new sound

- 1 **Using drag and drop:** Open the folder on the computer hard drive where the new sound is located.
- 2 Make sure that the Sound Manager window and the folder are visible on the screen.
- 3 Drag the new sound to the white area in the Sound Manager list. When the cursor gets a plus-sign, release the mouse button.



- 4 The Clean Deleted Space process will start to prepare the memory and then the new piano will be downloaded to the Nord instrument. If there isn't enough free space to complete the operation, a message about this will appear.

*If the Organize view is active, you can drop a sound on any free location in the bank. If this is not active, the new sound will be automatically placed at the first free location in the bank.*

**i** The pianos are categorized and can only be added to the bank they belong to; electric pianos cannot be added to the grand bank, grand's cannot be dropped in the clavinet bank etc. Samples can only be added to the Samp Lib partition, Programs to the program etc.

- 1 **Adding a sound using the Toolbar or Menu command:** Click on the Sound Down icon in the toolbar. The same command is also available in the File menu: Sound Download (Ctrl-D).
- 2 Browse to the folder on the hard drive where the desired sound is located, select it and click Open. The sound will now be added to the bank at the first free location.

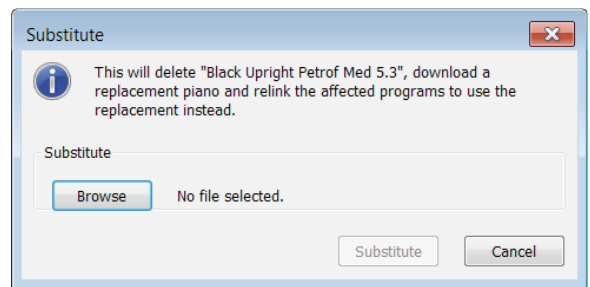
## Substitute

The Substitute feature replaces a piano or sample in the Nord instrument with another one that you want to use. There are many different sample instruments available for download from the [www.nordkeyboards.com](http://www.nordkeyboards.com) website.

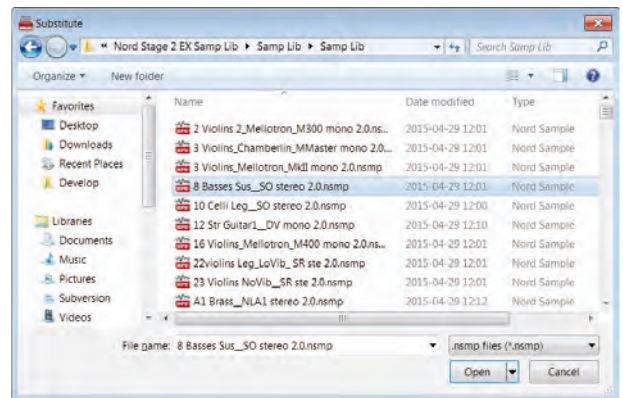
Substituting a piano/sample with another will automatically update all the Programs that used the previous sound to use the new sound instead.

- 1 Open the Piano or Sample tab. The current content of the partition in the Nord instrument will be displayed.
- 2 Select a sound in the list that you wish to substitute with a new one and click the Substitute icon in the toolbar.

*You can also right-click the sound and choose the Substitute option or use the Substitute command in the Edit Menu.*



The Substitute dialog informs you about the action about to take place. Click Browse to locate a new sound on the computer hard drive.



- 3 Press Open and then confirm by clicking Substitute.

The substitution will begin by deleting the original sound, then cleaning the memory, downloading the new sound and finally relinking all the programs to the new sound.

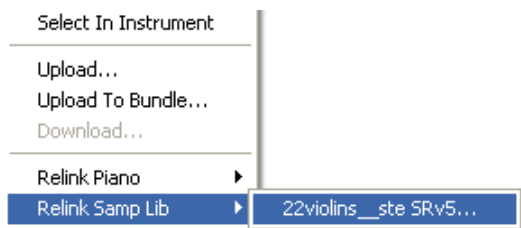
*If you use Substitute to try a sound and then change your mind, just substitute the new one with the previous one to get back to where you started from.*

## Relink

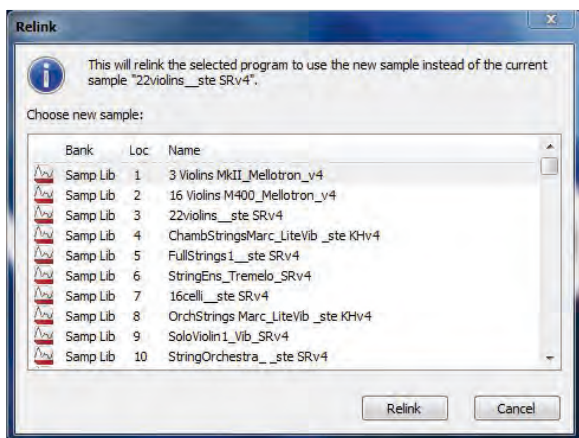
Relink is a powerful feature that makes it possible to change the piano or sample (or both) that one or several programs use. Let's imagine that you have downloaded a new favorite grand piano and want to change the programs that used your previous favorite grand, to the new one instead. Instead of manually changing every program on the instrument, Relink can achieve this in the Nord Sound Manager.

Let's Relink a program, to change what sound(s) the program should use.

- 1 Open the Program tab and right-click a program in the list.
- 2 Select the Relink Samp Lib option in the context menu. The menu will expand to show the sample that is linked to this program.



- 3 Select the sample and let go of the mouse button. This will open the Relink dialog where you can choose the new sound that the program should use instead.



- 4 Click Relink to relink the program to the new sound.
- i** You can only Relink programs to a sound that is already present in the Nord instrument.

## Download Queue

You can add several sounds, one by one, using the drop method, or with the Toolbar or Menu commands. These sounds will be put in the download queue. The memory will be cleaned if needed and the files will be downloaded to the instrument in the order they were added to the queue.

- 1 Select the desired partition that holds the type of sounds that you wish to load.
- 2 Drag a sound from the computer hard drive to the white area in the Sound Manager list.
- 3 Drag another sound to the white area in the Sound Manager list.

Instrument	Bank	Loc	Name	Size	Status
EPiano	1	EPiano 1	Mk I Low Deep 5.1	6.2 MB	Downloading... (17%)
EPiano	2	EPiano 2	Mk I ClosIdeal 5.1	5.9 MB	Queued
EPiano	3	EPiano 3	Mk II Shallow 5.1	6.8 MB	Queued
F Piano	4	FPS Bright Times CustomMod 5.1	14.8 MB	5.10	

Files that are placed in the queue will be displayed in bold.

- 4 If you wish to cancel an ongoing queue, you can either delete all files that are queued or press the Cancel button. During the Clean process the Cancel option is not available.

Files waiting in the queue can be deleted from the queue if you change your mind. Right-click on the queued sound or use the Toolbar or Menu Delete command.

**i** Files already in the instrument can be moved or deleted during the processing of the queue.

## Upload sounds from the instrument

- 1 Select the desired partition that holds the sounds that you wish to store on the computer hard drive.
- 2 Select the bank and the sound(s). Shift-click will allow you to select several consecutive sounds; Ctrl-click will allow you to select nonconsecutive sounds. Here is a selection of a few programs:

Loc	Name	Category
1	The Grand	Grand
2	Eltons Piano	Grand
3	ZawiTimes	EPiano
4	SparkleTop	EPiano
5	HardTimes	EPiano

- 3 Click the Sound Up icon or right-click the selected sound(s) and select Upload. The dialog will prompt you to browse to the desired destination folder on the hard drive. The upload process may take a few moments depending on the size of the sounds.

## Program/Performance Bundles

A Program/Performance Bundle contains one or several programs/performances, and all the pianos and samples that these programs use, in one file. Bundles are great to store parts of the memory from your Nord instrument. If you select one program and create a Bundle, the Bundle will be pretty small in size, and the uploading process will be reasonably quick, compared to a complete Backup procedure.

You can also create another Bundle with all the programs you need for a specific performance, and when you need those programs again, the Bundle functionality will restore them and their associated sound files to the Nord instrument.

Not all Nord instruments are compatible with the Bundle feature. Look at the Sound Manager page on the Nord website for further details.

**i** Pianos and samples that are used by several programs will not be duplicated in a Bundle, nor will they be downloaded back to the instrument if they already are in place in the instrument.



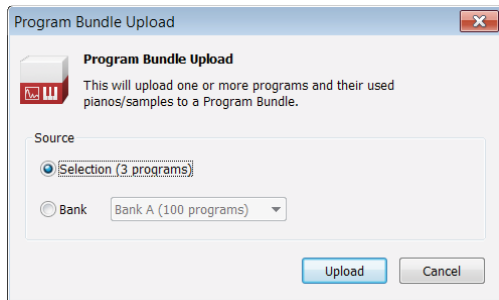
## Upload a Program Bundle

- 1 Open the Program Tab and select one, or several programs. Use Ctrl-click to make non-consecutive selections like this one:

Bank	Loca...	Name
Bank A	01:1	Italian Grand
Bank A	01:2	B3 Jazz Spell FS
Bank A	01:3	Quartet-Orch MW
Bank A	01:4	SparkleTop
Bank A	01:5	Lisa EX
Bank A	02:1	Mellow Upright
Bank A	02:2	B3 Gospelly MW
Bank A	02:3	Grand Peggio MW
Bank A	02:4	Tom Sawyer AT
Bank A	02:5	Darjeeling
Bank A	03:1	Grand Lady D
Bank A	03:2	Split M-Tron
Bank A	03:3	Clavinet A

- 2 Click on the Bundle Up icon in the Toolbar.

The Program Bundle Upload dialog gives you two choices:



**Selection** will create a Program Bundle with the selection of programs you made in the Nord Sound Manager program list and the pianos and/or samples that these programs use.

**Bank** makes a Bundle of an entire Bank that you select with the drop-down. This action will probably take a bit longer and the resulting Bundle will be a bigger file since there may be many more pianos and samples in this type of Bundle.

- 3 Choose the Selection option and click on Upload. In the following dialog, give the Bundle a meaningful name and find a location on the computer hard drive.

## Downloading a Bundle

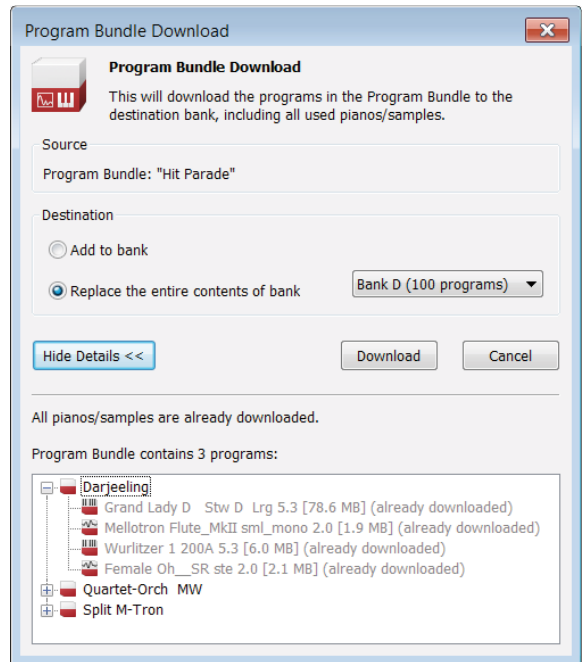
Here comes the really great part about Bundles. When you download a Bundle to the instrument, any pianos and samples that the programs in the Bundle depend on, are downloaded. They will be placed at the next available location in the piano and/or Samp Lib partition.

- *Pianos and samples are not duplicated if these files are already in the instrument. The Bundle programs will use the new or existing locations of the pianos and samples, when they are downloaded to the free locations in the program partition.*

- 1 Make sure the Program Tab is open.
- 2 Press the Bundle Down icon in the Toolbar. You can also use the Bundle Download command from the File menu (Ctrl+Shift+D).
- 3 Navigate to the Bundle file that you wish to download and click Open.

After the Manager has verified the files in the Bundle, the Program Bundle Download dialog will appear.

- 💡 *Click on Show Details if you want to see what programs, pianos and samples are in the Bundle.*



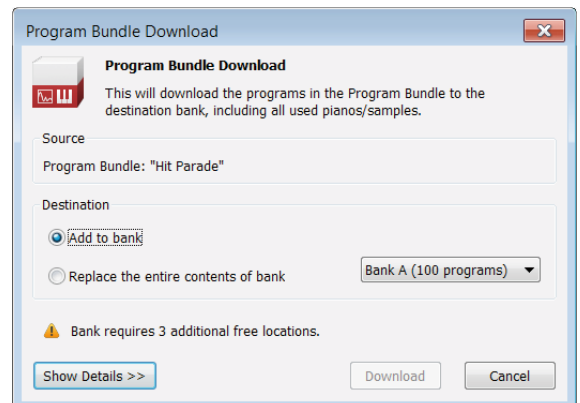
There are two options when you download a Bundle.

**Add to bank** will download the program files and add them to the program bank that you choose in the drop-down menu. The programs will be placed at the first available locations.

- *If the programs in the Bundle will not fit in the Bank, the process will not be performed and you will see a message about this. Delete or move some programs from that Bank and try again.*

**Replace contents in a bank** will simply delete all programs in the Bank you choose and download the programs in the Bundle to this bank instead. The programs will be placed at the same locations as they had when the bundle was created.

If a bundle will not fit in a bank, this will be presented in the dialog like in the image below where more free locations are needed in the program bank:



## Organize the program partition

By using drag and drop, you can organize the content of the Program partition(s).

- ① Make sure that Organize is turned on in the View menu.
- ② Select and drag a program from the destination location to the desired location.  
  
If you drop a sound on a free location, the sound will be moved from the source location. If you drop it on a location that is occupied, the two sounds will change locations.
- ③ Select a program and press the Ctrl-key on the computer keyboard. If you now drag this selection, the Program will be copied and pasted at the destination instead of just being moved.

## Search Box

By entering one or several characters in the Search Box, you can filter out the content that is presented in the lists.



This provides you with a quick way to find duplicate programs, etc.

## Auto Select

By clicking on the Auto Select icon in the toolbar, you toggle the Auto Select function on or off.

When Auto Select is turned on and you scroll through the pianos, samples or program lists using the computer keyboard arrow keys, the sounds will automatically be selected in the Nord instrument.



💡 *Double-clicking on a piano, sample or program will also make it active in the Nord instrument.*

## Backup

- ① Click on the Backup icon to make a backup file that contains all the content in your Nord instrument.

The Nord instruments are built to the highest standards of reliability but doing regular backups is always a good thing.



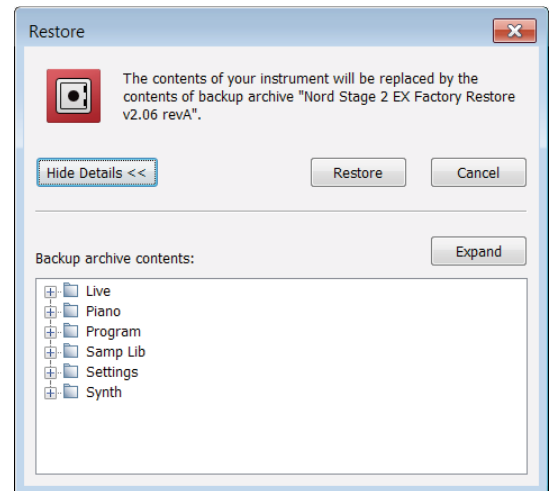
- ② Give the backup file a meaningful name and find a suitable location on your hard drive.

💡 *If you choose a backup file that already exists, only the changes that have occurred in the instrument will be added to that previous file.*

## Restore

When you want to restore the entire content of the Nord instrument, click on the Restore icon in the Toolbar and select a backup file that you have made. You can also drag the backup file from the computer and drop it to the Manager window.

The Confirm Restore dialog will appear that requires your confirmation. You can look at the content of the file if you click on "Show Details".



There are Factory Restore files available for all Nord instruments, which can be used to restore the content of the instrument to that which it was shipped with. The files are available for download from [www.nordkeyboards.com](http://www.nordkeyboards.com).

# Sound Manager reference

## Toolbar



### Info

Activating Info brings up an information area to the right of the list.

2	Grand Lady D Stw D Lrg
3	Bright Grand Ya54 Med
4	Studio Grand 2 YaC7 Lrg
5	EGrand 3 Amped CP80 mono...
1	Grand Upright YaU3 Lrg
2	Mellow Upright Bdrf C130 Med
3	Black Upright Petrof Med
4	Queen Upright Bdorf Med
5	Romantic Upright Schimmel ...
6	Saloon Upright Baumgardt M...
7	HonkyTonkUpright Sml
1	EPiano 1 Mk I Low Deep
2	EPiano 2 Mk I ClosIdeal
3	EPiano 3 Mk II Shallow

**EGrand 3 Amped CP80 mono Sml 5.3**  
Used by 6 programs:

Bank	Loc	Name
Bank A	15:1	Peters Grand
Bank B	10:4	Arpamed MW
Bank C	02:2	RubbaMix FS
Bank C	05:5	CP80 Amped
Bank C	09:1	DXheavenMW FS
Bank D	15:1	Peters Grand

The Info area will show if a selected piano or a sample is used in any Programs, or what pianos and samples are used in any selected Programs. This provides you with an excellent way of keeping track of how the content components in the Nord instrument depends on each other.

01:1	DX Full Times
01:2	Grand Strings
01:3	B3 Ethel Smith
01:4	Pulsycymbalom FS
01:5	Softwurl MW
02:1	Attack Bass
02:2	Osc-Orgy
02:3	Rick W
02:4	New Frontier
02:5	Brandenburg
03:1	80 Pi-layer MW
03:2	UkrainianBandura
03:3	B3 Full Tibias
03:4	Japanese
03:5	Filter Tapdance
04:1	Spain
04:2	GlassOrgan
04:3	Logical Tramp
04:4	Techno Tron
04:5	Dont Jump AT
05:1	WheelOfFortune
05:2	GirlsOnlyMW MC
05:3	Hidden Valley MW
05:4	Kraftwheel

**Info**

2 programs selected:

**Pulsycymbalom FS**  
Using 3 pianos/samples:

Slot	Bank	Loc	Name
Slot A	Grand	1	Italian Grand Faz XL 5.3
Slot A	Samp Lib	125	CymbalomHard_PS ste 2.0
Slot B	Grand	1	Italian Grand Faz XL 5.3
Slot B			(No sample)

**Brandenburg**  
Using 4 pianos/samples:

Slot	Bank	Loc	Name
Slot A	Harps	2	French Harpsi 1D Lo8 Lo4 5.3
Slot A	Samp Lib	19	StudioStr Leg_Vib_KH ste 2.0
Slot B	Harps	2	French Harpsi 1D Lo8 Lo4 5.3
Slot B	Samp Lib	45	All Winds __SR ste 2.0

Let's say you need to delete some of the factory samples to make room for new samples. By selecting a sample in the Samp Lib partition and activating Info, you can see which of the programs that would be affected by such a deletion (or replacement).

### Organize

When this option is active, the lists will show all the available locations in the selected partition/bank and not only the occupied ones. This will for instance make it possible to drag a file to a specific free location in the middle of the list. If this is inactive, only the occupied locations will be shown and re-arranging the order is not possible.

### Dual View

When this option is checked, the window (if set to display the Program partition) will be divided in two lists. You can make the lists show separate banks with the drop-downs. Rearranging programs is simply a matter of drag and drop. Drag a program from one bank/list to another bank/list in either direction.

### Auto Select

With this function active, scrolling through the piano, sample or program list with the computer keyboard arrow keys will automatically select the sound in the Nord instrument.

### Rename

This allows you to rename a program. 16 characters can be used, and the supported characters are: a-z, A-Z, 0-9 and the hyphen (-). Any other characters will not be displayed in the Sound Manager lists.

**i** *Pianos or samples cannot be renamed so this function is not available if you have selected any of these.*

### Delete

Allows you to delete one or several selected sounds. You will be asked to confirm your intentions. You may also use the delete or backspace key on the computer keyboard to perform this action.

**i** *Any Program in the Nord instrument that used a particular piano or sample that you deleted will probably not sound at all, since it will be missing an important component.*

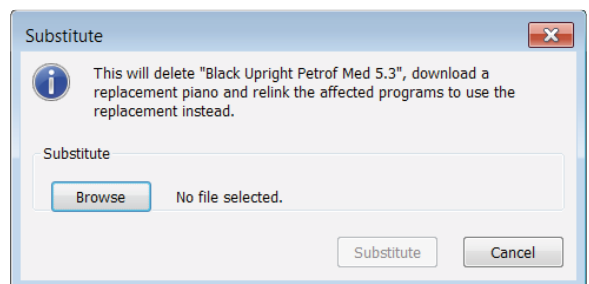
The space that a deleted piano occupied is not immediately available to other sounds, even though it is gone from the list and its location is free. The Flash memory needs to be cleaned to free up the space where the deleted sounds have been. When you add a new piano the cleaning process will be initiated automatically. You also have the option to manually start the cleaning process with the Clean Deleted Space command from the File menu.

**i** *Flashing LEDs in the Piano Type and Model section indicates that the piano that the current program tried to use is not available in the Nord instrument memory. Select another program or download the missing piano to the Nord instrument.*

### Substitute

Substitute allows you to replace a selected piano or a sample with another piano or sample that you have on the computer hard drive.

This function is not only about replacing the sound file in the memory, all the programs that used the old sound, will be updated, relinked to use the new sound instead.



### Relink

Use the Relink feature if you want one or several selected programs to use another piano or sample instead of the current sound. The sound in question have to be present in the memory of the Nord instrument. Relinking can also be used if a piano or sample is absent in the Nord instrument, to repair the programs that are missing a component.

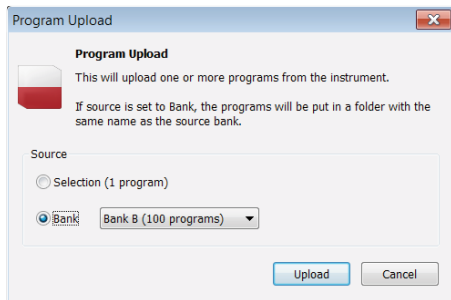
**i** *Not all Nord instruments are compatible with the Substitute and Relink features. In these cases the toolbar icons will be grayed out.*



## Sound Up

Use this function to upload one or several sounds from the Nord instrument to the computer hard drive.

The Sound Up dialog allows you to choose either the current selection of sounds or an entire bank.



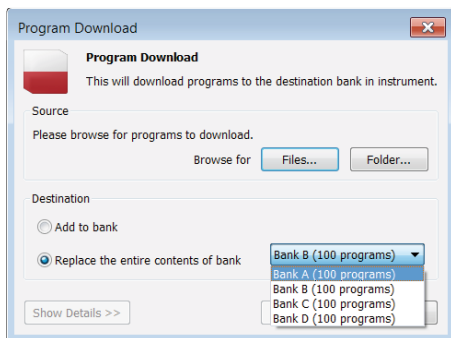
Clicking Upload brings up a file dialog where you select a location for the files on the computer hard drive.

## Sound Down

Use Sound Down to download one or several sounds from the computer hard drive to the next available location in the selected partition.

The Sound Down dialog gives you a few choices regarding the source files and their destination.

Source Files is the option when you want to browse for, and select individual files on the computer hard drive.



Source Folder is the option when you want to browse for and select an entire folder that contains sounds; all of the folder content will be downloaded to the instrument.

**i** *The files in the folder have to be of the same kind.*

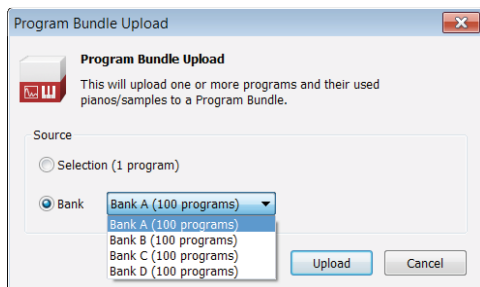
Destination Add to bank will add the selected source files to the bank you select in the drop down menu. If the number of source sounds does not fit in the destination bank, a message will appear.

Destination Replace the content in bank will delete all the sounds in the selected bank in the instrument and replace those with the source files.

Show Details will list the source files before they are downloaded to the instrument.

## Bundle Up

This function will upload a selection of programs or an entire Bank to the computer hard drive, and include all the pianos and/or samples that these programs use in a Program Bundle file.

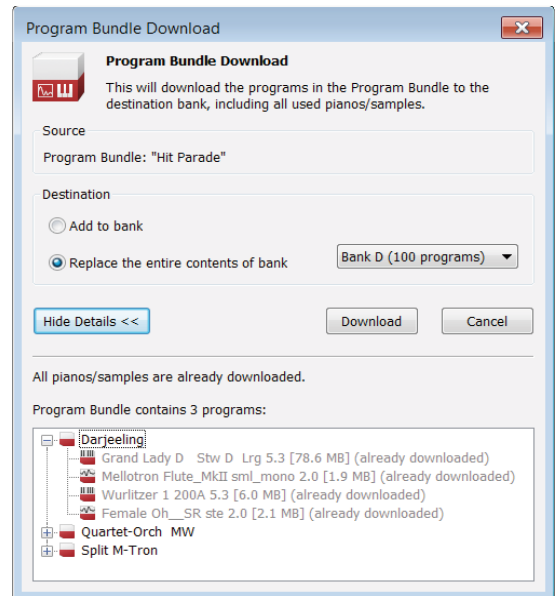


The default source will be the currently selected Program(s) or the active bank, but you can choose another bank with the drop down menu.

Click on the Upload button to enter the name of the Bundle and to select the destination on the hard drive. The Program Bundle file that is created on the hard drive will have a file extension that ends with "pb".

## Bundle Down

This function will download a Bundle with programs, pianos and samples from the computer hard drive to the Nord instrument. You have a choice if you want the Bundle to be appended to the existing programs in the bank in focus or if the Bundle should replace the contents in an entire bank of your choice.



Programs in a Program Bundle will be downloaded to the locations where they came from if the Replace option is selected.

**i** *Not all Nord instruments are compatible with the Bundle feature.*

## Backup

This will make a backup of all the pianos, samples, programs, and in some instruments also the live programs and the menu settings. Backing up the entire memory content in this manner will take some time, depending on the sizes of the pianos and samples installed.

**i** *Backing up from the Nord Sound Manager is done in an incremental manner. Unless you change the name or the location of the backup file, only the pianos and/or programs that have been changed since the previous backup will be saved.*

The Nord Sound Manager will suggest a location for the backup the first time this function is selected (in My Documents/Nord Sound Manager files/). If you'd rather save the backup file elsewhere, use the file dialog to pick another destination.

## Restore

To restore a previously saved backup file to the Nord instrument, select this option and browse to a backup file on the hard drive and click Open.

**w** *The restore process will begin after you have clicked Open and confirmed your intentions in the dialog. All the content that isn't in the backup file in a connected Nord instrument will then be irrevocably replaced by the content in the backup file.*

# Menus

The usual Windows and Mac OSX keyboard commands can be used in the Nord Sound Manager. The menus can be accessed by pressing the Alt key and the underlined letter in the menu bar.

Most of the commands can also be accessed by pressing the Ctrl (on the Mac - Command) key together with the letter shown next to the command name in the menus.

## File menu

### Sound Upload (Ctrl+U)

Use this function to upload one or several sounds from the Nord instrument's memory to a folder on the computer hard drive.

### Sound Download (Ctrl+D)

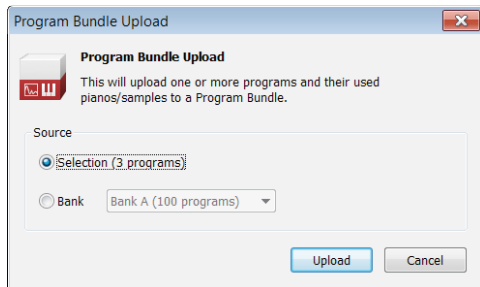
Use this function to download one or several sounds from the computer hard drive to the next available location in the selected partition.

Look at page 8 for a detailed description of Sound Up and Sound Down.

### Program Bundle Upload (Ctrl+Shift+U)

This function will upload a selection of programs or an entire Bank to the computer hard drive, and include all the pianos and/or samples that these programs use in a Program Bundle file.

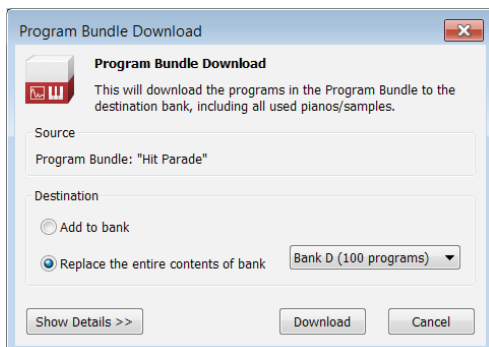
The default source will be the currently selected program(s) or the active bank, but you can choose another bank with the drop down menu.



Click on the Upload button to enter the name of the Bundle and to select the destination on the hard drive. The Program Bundle file that is created on the hard drive will have a file extension that ends with "pb".

### Program Bundle Download (Ctrl+Shift+D)

This function will download a Bundle with programs, pianos and samples from the computer hard drive to the Nord instrument. You have a choice if you want the Bundle to be added to the existing programs in the bank in focus or if the Bundle should replace the contents in an entire bank of your choice.



**i** Not all Nord instruments are compatible with the Bundle feature.

### Backup (Ctrl+B)

This will make a backup of all the pianos, samples, programs, performances, Live programs and the menu settings in the Nord instrument. Backing up the entire memory content in this manner will take some time, depending on the sizes of the pianos and samples installed.

**i** Backing up from the Nord Sound Manager is done in an incremental manner. Unless you change the name or the location of the backup file, only the pianos and/or programs that have been changed since the previous backup will be saved.

The Nord Sound Manager will suggest a location for the backup, the first time this function is selected (in My Documents/Nord Sound Manager files/). If you rather keep the backup file elsewhere, use the browser to pick another location.

### Restore (Ctrl+R)

To restore a previously saved backup file to the Nord instrument, select this option and browse to a backup file on the hard drive and click Open.

**w** The restore process will begin after you have clicked Open and confirmed your intentions in the dialog. All the content of a connected Nord instrument will then be irrevocably replaced by the content of the backup file.

### Clean Deleted Space

This function will clean up the space where any previously deleted pianos or programs have been. This is done in order to make this deleted memory space available to new additions.

**i** Cleaning is automatically done if you download a new piano or program to the Nord instrument, but this menu command makes it possible to manually start the cleaning process.

### Format

This is a radical function; it will format the entire partition that is in focus. All the sounds in the partition will be deleted. You will be asked to confirm your intentions. Do not show your cat this.

### Export Sound Lists

The Export command will create a set of text-based lists of the content in the instrument, saved to location of your choice. The number of lists created depends on the type of instrument. The lists contain information with the names, locations and sizes of pianos and samples, the program list also contain information of which piano and/or samples are used for every program in the instrument.

The lists are formatted in a .html format. Double-click on a list to view it with a web browser, an application that probably can print them for you as well. The lists can be opened with a spreadsheet application, if you wish to perform further manipulation.

### Exit (Ctrl+Q)

Exits the Nord Sound Manager application.

## Edit menu

### Rename (Ctrl+N)


This allows you to rename a program. 16 characters can be used, the supported characters are: a-z, A-Z, 0-9 and the hyphen (-). Any other characters will not be displayed in the Sound Manager lists.

Rename	Ctrl+N
Delete	Del
Substitute...	Ctrl+T
Relink...	Ctrl+K
Select All	Ctrl+A
Invert Selection	

**i** Pianos or samples cannot be renamed so this function is not available if you have selected any of these.

**Delete (Del)**

Allows you to delete a selected item(s) from the Nord instrument's memory.


 *A dialog will appear with information if this action will affect any programs in the Nord instrument, that uses these sound. You will be asked to confirm your intentions.*

**Substitute (Ctrl+T)**

This allows you to replace a selected piano or a sample with another piano or sample that you have on the computer hard drive. This will also change all programs that used the previous sound, to the new sound instead.

**Relink (Ctrl+K)**

Use the Relink feature if you want one or several selected programs to use another piano or sample instead of the current sound. The sound in question have to be present in the memory of the Nord instrument. Relinking can also be used if a piano or sample is absent in the Nord instrument, to repair the programs that are missing a component.

 *Not all Nord instruments are compatible with the Substitute and Relink features, in which case these items will be grayed out.*

**Select All (Ctrl+A)**

Select all items in a bank/partition.

**Invert Selection**

This will deselect the original selection and then select all the other items in the list.

**View menu**


**Organize (Ctrl+O)**

When this option is checked, the lists will show all the available locations in the selected partition/bank and not only the occupied ones.

This will for instance make it easier to drag a file to a specific free location in the middle of the list. If this is unchecked, only the occupied locations will be shown.

**Dual View (Ctrl+L)**

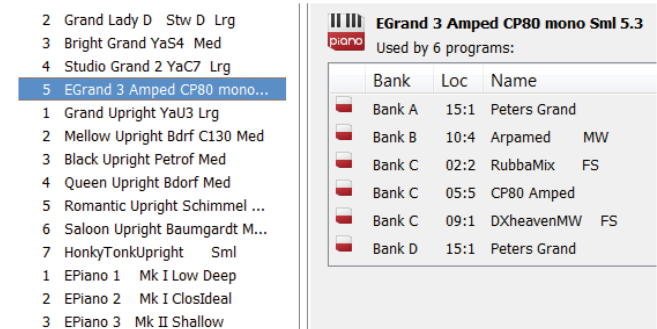
When this option is checked, the window will be divided in two lists. The two lists makes it easy to move programs from one location to another. You can make the lists show separate banks with the drop-downs. Rearranging programs is simply a matter of drag and drop. Drag a program from one bank/list to another bank/list in either direction.

 *Press the Ctrl-key on the computer keyboard before dragging to copy a selection to the destination during a drag and drop operation.*

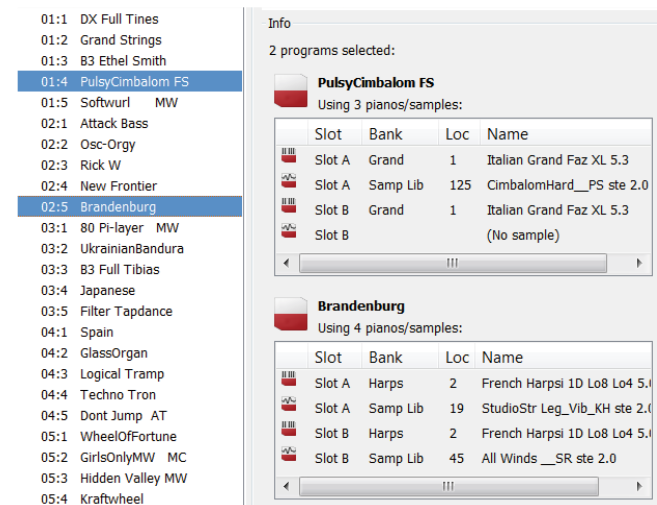
Organize	Ctrl+O
Dual View	Ctrl+L
Info	Ctrl+I
Find...	Ctrl+F
<b>Auto Select</b>	

**Info (Ctrl+I)**

Activating Info brings up an information area to the right of the list.



This area will show if a selected piano or a sample is used in any programs, or what pianos and samples are used in any selected programs.



**Find Ctrl+F**

This is a shortcut to the Search Box. By entering one or several characters in the Search Box, you can filter out the content that is presented in the lists.

**Auto Select**

When this function is active, pianos, samples or programs will be automatically selected in the Nord instrument when you browse through the sounds in the Manager list, with the computer keyboard arrow keys.

**Help menu**

[About...](#)

**About**


Brings up the About box with a information regarding the version of the Nord Sound Manager. You will also see a list of compatible instruments and OS versions.

## Tabs



### Piano – Samp Lib - Program - Performance

Use the tabs to select the desired partition. The drop down menu is used to select the desired bank within the piano, sample or program partitions. The content of the partition will be presented in the list.

 *Press the Ctrl + Tab keys on the computer keyboard to cycle between the tabs.*

### Search Box

Enter a phrase to quickly shown any pianos or programs that contains the characters in their names. Press Clear to clear the filtering and show all entries again.

### Loc - Location

The banks are organized in locations; the number of locations varies for the different bank types.

### Name

The name of the item.

### Size

Shows the file size of the pianos and samples. This may be useful if you need to know how much space for example a particular piano occupies in the piano partition. This unit is not shown in the program lists.

### Ver – Version Number

This indicates the version number of the actual piano, sample or program format. Older OS versions may not be able to use sounds in a newer format.

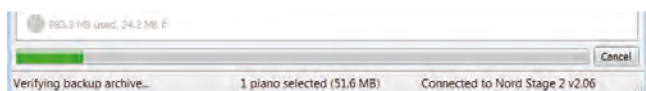
### Note

This area contains various information messages regarding the memory content in the Nord instrument. If a piano or sample is not used by any of the programs, it will be indicated here. This area is also used to alert you if a piano or a sample that a program in the Nord instrument would use, is missing from the instrument.

On a rare occasion that something happens with any of the files in the instrument, error information about broken, corrupted or rejected files, will be displayed here. If this happens, delete the broken file and download it again to the instrument.

### Footer Area

The footer area is located at the bottom of the Nord Sound Manager window.



## Partition Memory Indicator

This indicates the usage of the selected partition's memory. The dark area shows the used memory and the brighter area indicates space that is available for additional sounds.

## Cancel Button

Use this function if you need to cancel a process that is in progress. Certain actions like a restore process cannot be cancelled once they have been started.

## Progress Bar

The progress bar indicate the progress of an ongoing process.

## Message/Text Area

The left part of the text area will present any confirmations or error messages from the Nord Sound Manager.

The right part will indicate of a Nord instrument is connected to the computer and in communication with the Nord Sound Manager. The OS version of the connected Nord instrument will also be displayed here.

## Updates and sounds

Please visit our website at <http://www.nordkeyboards.com> to download any updates of the Nord Sound Manager and sounds that have been released for the Nord instrument. These items will be available as free downloads in the Download area and in the Libraries areas.

---

## Index

### A

Append 5  
Auto Select 7

### B

Backup 8, 9  
Bundle Down 8  
Bundle Up 8

### C

Cancel 11  
Clean Deleted Space 9

### D

Delete 7, 10  
Dual View 7

### E

Exit 10  
Export Soundlists 9

### F

File extensions 2  
File Formats 2  
Format 9

### I

Info 7, 10  
Invert Selection 10

### L

Loc 11

### N

Note 11

### O

Organize 7

### P

Partition Memory 11  
Program Bundle 4, 9  
Progress 11

### R

Relink 2, 4, 7  
Rename 10  
Restore 9

### S

Select All 10  
Size 11  
Sound Down 7  
Sound Upload 9  
Substitute 3, 7